

 400-811-0456  
24小时免费服务热线

## 速捷电梯有限公司

杭州 杭州临安区青山湖科技城科技大道 2329 号

电话：0571-61110202

成都 成都双流西南航空港经济开发区双华路 188 号

电话：028-85881185 传真：028-85856202

天津 天津空港经济区航空路 278 号

电话：022-88956150 传真：022-88956162

网址：www.sjlift.com

版本号 2019.05

本书为一般信息出版物，我们保留随时更改产品技术和说明的权利。

本书中的任何字句，无论其字面意思或含义，对任何产品的用途和质量，或者任何购销合同条款的表述与更改均不承担责任。

(产品外观仅供参考，具体以实物为准)



**SURAPID 速捷**

**捷锐 | 无机房客梯**  
MRL PASSENGER ELEVATOR



西子旗下公司

速动未来，捷行天下

Speed Shuttling Future

# 速捷三大基地

速捷的战略布局，使得交货更加方便快捷、灵活高效，更好的服务每一位客户。

## THREE BASES OF SURAPID

The strategic layout of SURAPID makes delivery more convenient, quick, flexible and efficient, better serves to every customer.

### 杭州基地 行业领先的智慧型工厂

Hangzhou base's industry-leading intelligent factory



### 成都基地 西南重要的电扶梯生产制造商之一

One of the important manufacturers of escalators in the southwest of Chengdu base



### 天津基地 北方重要的电扶梯生产制造商之一

One of the important manufacturers of escalators in the north of Tianjin base



速捷试验塔208M

地上190米 地下18米

Speedometer test tower 208 meters  
above ground 190 meters,  
underground 18 meters

# 品牌 底蕴

BRAND DETAILS

## 西子 XIZI

西子 XIZI 是一家以装备制造为主，跨行业经营的综合型企业集团，拥有电梯、重工、锅炉、航空、现代服务业五大产业群，是中国500强企业之一。

## 速捷 SURAPID

速捷是西子旗下公司，承载着西子 XIZI 多年研发和技术积淀，经不断发展，现已形成“一个中心，三大基地”的战略布局。

XIZI is a comprehensive enterprise group that mainly manufactures equipment and operates across industries. It has five major industrial groups such as elevators, heavy industries, boilers, aviation and modern service industries, the Company is one of the top 500 enterprises in China.

SURAPID is a subsidiary of XIZI. It carries XIZI's research and development and technological accumulation for many years. Through continuous development, it has now formed a strategic layout of "one center and three bases."

## 500 强

速捷是西子旗下公司

Fortune 500 SURAPID is a subsidiary of XIZI

我们：

- 2001年 研发第一台国内自主知识产权的无齿轮曳引机
- 2005年 组建国内第一条无齿轮曳引机专用磁钢生产线
- 2008年 研发国内第一台7m/s永磁同步无齿轮曳引机
- 2009年 人机界面荣获德国IF设计大奖
- 2010年 门机实验室获得由CNAS颁发的国家级试验室认可证书
- 2011年 SUPER-CON高速梯门机，获得国际先进称号
- 2011年 无齿轮曳引机入围国家“节能产品惠民工程”高效电机推广目录
- 2016年 门机累计发货量超过60万台，在电梯部件厂中位列第一
- 2016年 主机累计发货量超过80万台，无齿轮曳引机市场占有率第一

- 2001 The first domestic gearless traction machine with independent intellectual property rights was developed by us .
- 2005 The first special magnetic steel production line for gearless traction machines in China was established .
- 2008 The first 7m/s permanent magnet synchronous gearless traction machine in China was developed.
- 2009 Two LOP won German IF Design Award.
- 2010 The gantry crane laboratory obtained the international laboratory accreditation certificate issued by CNAS.
- 2011 SUPER-CON high-speed door won the international advanced title.
- 2011 Gearless traction machine shortlisted for national "energy saving product Huimin project" high efficiency motor promotion catalog.
- 2016 The cumulative delivery volume of gate machines exceeded 600,000 units, ranking first among elevator parts factories.
- 2016 The total delivery volume of mainframes exceeded 800,000 units, and gearless traction machines had the first market share.

速捷杭州基地

速捷天津基地

源自  
西子

ORIGINATED FROM XIZI

## 速捷三大核心部件

速捷主机、门机、控制柜源自西子，西子坚持行业内最严格的质量标准，确保产品达到行业内最高品质标准。

### THREE CORE COMPONENTS OF SURAPID

The machine, door and control cabinet of SURAPID are originate from XIZI. XIZI adheres to the most stringent quality standards in the industry to ensure that the products reach the highest quality standards in the industry.

## 速捷三大安全部件

速捷限速器、安全钳、缓冲器源自西子，西子拥有资深的电梯安全部件研发专家，同时配置了行业内先进的检测设备和仪器，加强安全检测。

### THREE SAFETY COMPONENTS OF SURAPID

The limiter, safety tongs and buffer of SURAPID are originating from XIZI. XIZI has experienced elevator safety component research and development experts. It is equipped with advanced detection equipment and instruments in the industry to strengthen safety detection.

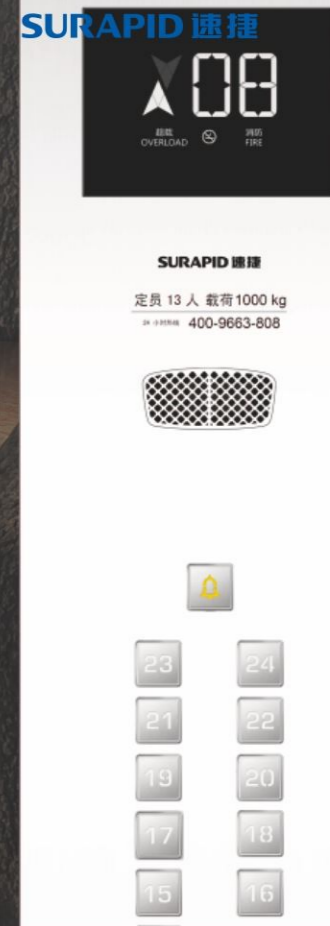


# 节能技术 有效减少建筑的碳排放

- 一款集安全、智能、舒适、绿色为一体的高性能电梯
- 一款把人性设计做到极致的现代电梯
- 一款成熟可靠的经典电梯

## ENERGY SAVING TECHNOLOGY TO EFFECTIVELY REDUCE CARBON EMISSION FROM BUILDINGS

A high-performance elevator integrating safety, intelligence, comfort and green  
A modern elevator that makes the design of human nature to the extreme  
A mature and reliable classic elevator



## 节能曳引机

速捷电梯采用永磁同步无齿轮曳引机，无需励磁，启动电流小，传动效率高，结构更合理。

### ENERGY SAVING TRACTOR

SURAPID adopts permanent magnet synchronous gearless traction machine, which does not need excitation, has small starting current, high transmission efficiency and more reasonable structure.

### 传动效率高和编码器反馈精确

效率达到87%，达到国家二级能效指标可享受国家节能补贴

采用德国海德汉编码器，反馈精确，消除了干扰带来的电梯振动

### HIGH TRANSMISSION EFFICIENCY AND ACCURATE ENCODER FEEDBACK

The efficiency reaches 87%, and the state energy conservation subsidy can be enjoyed if the national secondary energy efficiency index is reached.

Germany Heidenheim encoder is used to provide accurate feedback and eliminate elevator vibration caused by interference.

### 运行噪音小

超静音制动器有效降噪5-10dB，制动力超进口同类产品

主机空载噪音52dB，机房噪音可控制在75dB内，行业领先

### LOW OPERATING NOISE

Ultra - mute brake effectively reduces noise by 5 - 10 dB, and braking force exceeds imported similar products

The no-load noise of the mainframe is 52 dB, and the noise of the machine room can be controlled within 75 dB, which is leading in the industry

### 主机发热低、不退磁

主机满负荷运行一小时，温升不高于90k，低于国家标准15K

优化机房的环境温度，增加主机寿命

### THE HOST COMPUTER HAS LOW HEAT GENERATION AND DOES NOT DEMAGNETIZE

The machine runs at full capacity for one hour, and the temperature rise is not higher than 90k, which is lower than 15k, the national standard.

Optimize the ambient temperature of the computer room and increase the service life of the mainframe

### 主机核心部件自制

磁钢、曳引轮、制动器、机座、转子自行生产，行业唯一

曳引轮硬度差在15HBW内，大大延长钢丝绳寿命

### SELF-MADE CORE COMPONENTS OF MACHINE COMPUTER

Magnet, sheave, brake, house, rotor self - produced, and the unique in the industry

The difference in hardness of the traction sheave is within 15 HBW, which greatly prolongs the service life of the steel wire rope.

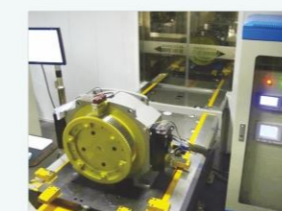


### 国家二级能效等级证书



## EACH TRACTOR OF SURAPID HAS BEEN RIGOROUSLY TESTED 速捷每一台曳引机都经过苛刻的测试

### 4项可靠性测试 4 RELIABILITY TESTS



破坏验证  
极限能力  
测试验证  
潜在需求

Destructive verification  
Ultimate ability  
Test verification  
Potential demand

### 12项安全性测试 12 SAFETY TESTS



制动器可靠性测试  
整机变形破坏测试  
盘车轮崩齿力或变形  
轴承寿命  
铜压板固定  
磁钢氧化条件  
曳引轮和钢丝绳  
密封件老化  
屏极限工作温度  
绝缘突破测试  
制动力条件测试  
系统破坏性

Brake reliability test  
Whole machine deformation failure test  
Jigger wheel breaking force or deformation  
Bearing life  
Copper plate fixation  
Oxidation conditions of magnetic steel  
Traction sheave and wire rope  
Seal aging  
Working temperature limit  
Insulation breakthrough test  
Braking force condition test  
Damage of system



## 能源再生 ※

将势能转化为电能，并通过能源再生变频器清洁过滤后反馈给电网，供中央空调、照明设备等其他用电设备使用，节省成本。

### ENERGY REGENERATION

The potential energy is converted into electric energy and fed back to the power grid after being cleaned and filtered by the energy regeneration frequency converter for use by other power equipment such as central air conditioning and lighting equipment, thus saving cost.

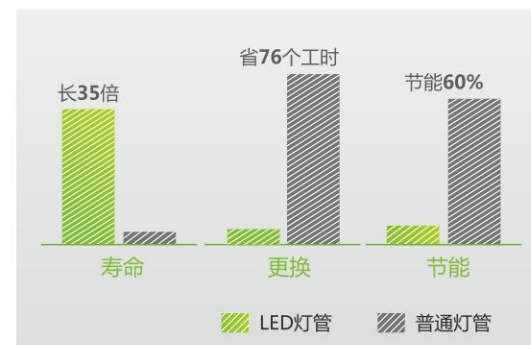


## LED高效能绿色光源

轿顶照明、井道照明、底坑照明均采用LED灯，比传统照明效率高80%，照明时长是日光灯的10倍，同时无光照污染，无汞环保，绿色可回收。

### LED HIGH PERFORMANCE GREEN LIGHT SOURCE

LED lamps are used for car top lighting, shaft lighting and pit lighting, which are 80% higher than traditional lighting efficiency and the lighting duration is 10 times longer than that of fluorescent lamps. At the same time, there is no light pollution, no mercury pollution, green and recyclable.



备注：※ 可选功能 Remark: ※ Optional

## 达到 TUV 最高能效等级

速捷一直致力于研发更加节能的电梯解决方案帮助客户节省费用，我们的节能主要通过主机、轿厢设备、控制系统三个途径。

### REACH TUV HIGHEST ENERGY EFFICIENCY LEVEL

SURAPID has been dedicated to developing more energy-saving elevator solutions to help customers save costs. Our energy savings are mainly through the machine, car equipment and control system.



## 轿顶应急电源采用锂电池

轿顶应急电源采用锂电池，寿命长，重量轻，污染小；相比较铅酸蓄电池，锂电池所使用的材料里不含有污染性金属、有害重金属物质，在生产及使用过程中不产生污染物，保障人体的健康，废电池回收过程中污染水源和土壤的难题也因此迎刃而解。

### LITHIUM BATTERY IS USED AS EMERGENCY POWER SUPPLY FOR CAR TOP

Lithium battery is used as emergency power supply for car top, which has long service life, light weight and little pollution. Compared with lead-acid batteries, the materials used in lithium battery do not contain polluting metals or harmful heavy metals. Lithium battery does not produce pollutants during production and use, thus protecting human health. Therefore, the problem of polluting water sources and soil during the recovery of waste batteries is solved.



# 安全保护 时刻保障您的安全

每一次与速捷的邂逅都有光幕门的保护  
每一次意外断电都会保证您的安全和及时疏散  
每一个解决方案以乘梯的安全为第一要务

SECURITY PROTECTION TO ENSURE YOUR SAFETY AT ALL TIMES

Every encounter with SURAPID is protected by a light curtain.  
Every accidental power outage will ensure your safety and timely evacuation.  
The safety of taking elevator is the top priority of every solution.



## 安全门机

门电机采用永磁同步变频电机，提高了电机的输出力矩，低噪高效，大幅度节省能耗。

### SAFETY DOOR

The door motor adopts a permanent magnet synchronous frequency conversion motor, which improves the output torque of the motor, has low noise and high efficiency, and greatly saves energy consumption.

### 安全和节能

在意外断电时，无论门开到什么位置，都会在保护作用下慢慢关门

采用永磁同步电机，提高电机输出力矩，大幅节省耗电量

### 运行可靠、故障率低

300万次（国家标准200万次）可靠性运行验证

拥有国家级的实验室

40多万台工地在用量，故障率极低

### 适应工地复杂环境

宽电压设计，可适应±20%的电压波动，抗工地电压不稳定性

电机防护IP54，湿度98%，可防工地溅水、多灰尘、砂浆情况

### 效率高、噪音低及免调试

最短开门时间2S，噪音仅50dB，运行效率高，噪音低  
现场安装后，免调试

### SAFETY AND ENERGY CONSERVATION

In the event of an unexpected power failure, no matter where the door is open, it will slowly close under protection.

The permanent magnet synchronous motor is adopted to improve the output torque of the motor and greatly save power consumption.

### RELIABLE OPERATION AND LOW FAILURE RATE

3 million times (national standard 2 million times) reliability operation verification.

Having a national laboratory.

More than 400,000 construction sites are in use and the failure rate is extremely low.

### ADAPT TO COMPLEX ENVIRONMENT OF CONSTRUCTION SITE

The wide voltage design can adapt to ±20 % voltage fluctuation and resist site voltage instability.

Motor protection IP54, humidity 98%, can prevent water splashing, dust and mortar on the construction site.

### HIGH EFFICIENCY, LOW NOISE AND NO DEBUGGING

The shortest opening time is 2S, the noise is only 50dB, the operation efficiency is high, and the noise is low.

No commissioning after site installation.

## 门机测试情况 DOOR MACHINE TEST

### 整机功能测试 WHOLE MACHINE FUNCTION TEST

测试项目 TEST ITEMS	
静态定位	开关门曲线调整
检测电机正反转	开关门保持力矩调整
自学习	输入电源电压变化范围
演示运行	断电慢关门
单次试运行	电流反馈电路故障保护
重开门	异步门刀可选择功能
Static positioning	Switch door curve adjusting
Detecting positive and negative rotation of motor	Switch door holding torque adjustment
Self-learning	Input power supply voltage variation range
Demonstration operation	Power cut, slow closing
Single trial run	Current feedback circuit fault protection
Reopening door	Selectable function of asynchronous door opener

### 异常状态测试 ABNORMAL STATE TEST

测试项目 TEST ITEMS	
输入电源过压、欠压	电机三相中的任意一相与地短接
开关门阻挡	门板撞击测试 (30KG 15次)
开关门跳齿	地坎砂浆测试
编码器故障 (包括信号缺失断线短路等)	上坎门机联动砂浆测试
输出缺相	外力反复推拉/阻挡测试
短接电机三相中的任意两相	门板负重120KG耐久测试
Input power overvoltage, under voltage	Any one of the terms of the motor met will be shorted to ground
Open/close the door obstructing	Door plank impact test
Open/close the door jumping gear	Sill mortar test
Encoder failure	Upper sill / gantry linkage mortar test
Output out phase-deficient	External force and repeatedly push-pull / blocking test
Any two of the three short-circuit motors	Door plank load 120KG endurance test

### 关键部件51628测试 TESTING OF KEY COMPONENTS 51628



整机测试12项全部通过  
编码器测试12项全部通过  
电机测试18项全部通过  
控制器测试17项全部通过

12 whole machine tests passed  
12 encoder tests passed  
18 motor tests passed  
17 items tested by the controller passed

### HALT高加速寿命测试 HALT HIGH ACCELERATION LIFE TEST



振动应力  
信号输入口电压拉偏应力  
湿度应力  
电源口电压拉偏应力  
电机堵转应力

Vibration stress  
Voltage bias stress at signal input port  
Wet temperature stress  
Voltage bias stress at power supply port  
Locked rotation stress of motor



### 光幕门保护(升级至194束) 新

光束数量达到194束以上，超普通光幕40束，关门全过程无盲区；能检测出鸡蛋大小（直径不小于5cm）的障碍物。安全性能高，进出自如。

#### SCREEN DOOR PROTECTION (UPGRADED TO 194 BEAMS)

The number of light beams has reached 194 or more, exceeding 40 ordinary light screens, and there is no blind area in the whole process of closing the door. Obstacles of egg size (diameter not less than 5 cm) can be detected. It is High safety performance and easy access.

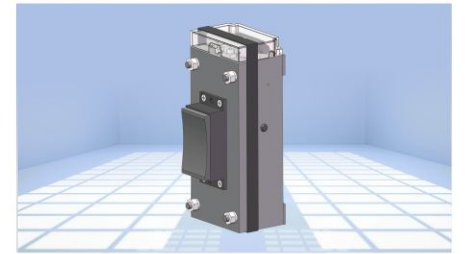


### 抱闸力矩自检测 新

定时自动检测闸力矩，保证抱闸有效。

#### SELF-DETECTION OF BRAKE TORQUE

The brake torque is automatically detected at regular intervals to ensure that the brake is effective.



### 门旁路功能 新

可方便快速短接厅、轿门锁，同时无法正常快车运行，避免出现工地短接后未恢复，导致门锁失效；轿底增加声光信号报警，提升底坑人员安全。

#### DOOR BYPASS FUNCTION

The car door lock of the hall and the car can be conveniently and quickly short connected, at the same time, the elevator cannot run expressly as usual, thus avoiding the failure of the door lock caused by the failure of the site short connection. Audible and visual signals are added to the car bottom to alarm and enhance the safety of pit personnel.



### 紧急制动功能 新

若抱闸失效，系统可及时驱动主机制停，双保险。

#### EMERGENCY PARK FUNCTION

If the brake fails, the system can drive the main mechanism to park in time, which is extra safe.



### 厅轿门系统防撞强度高

厅轿门系统防撞试验，超过国家最新标准要求，防撞强度高。

#### HALL CAR DOOR SYSTEM HAS HIGH ANTI-COLLISION STRENGTH

The anti-collision test of the car door system exceeds the latest national standards and has high anti-collision strength.



### 轿厢意外移动保护装置 (UCMP)

当电梯轿厢处于平层开锁区域时，如果出现意外移动，立即启动制停保护，自动制停电梯，为乘客增加又一道安全保障。

When the elevator is in leveling and the door is open, elevator detects unexpected move, UCMP security device immediately, stop the elevator.



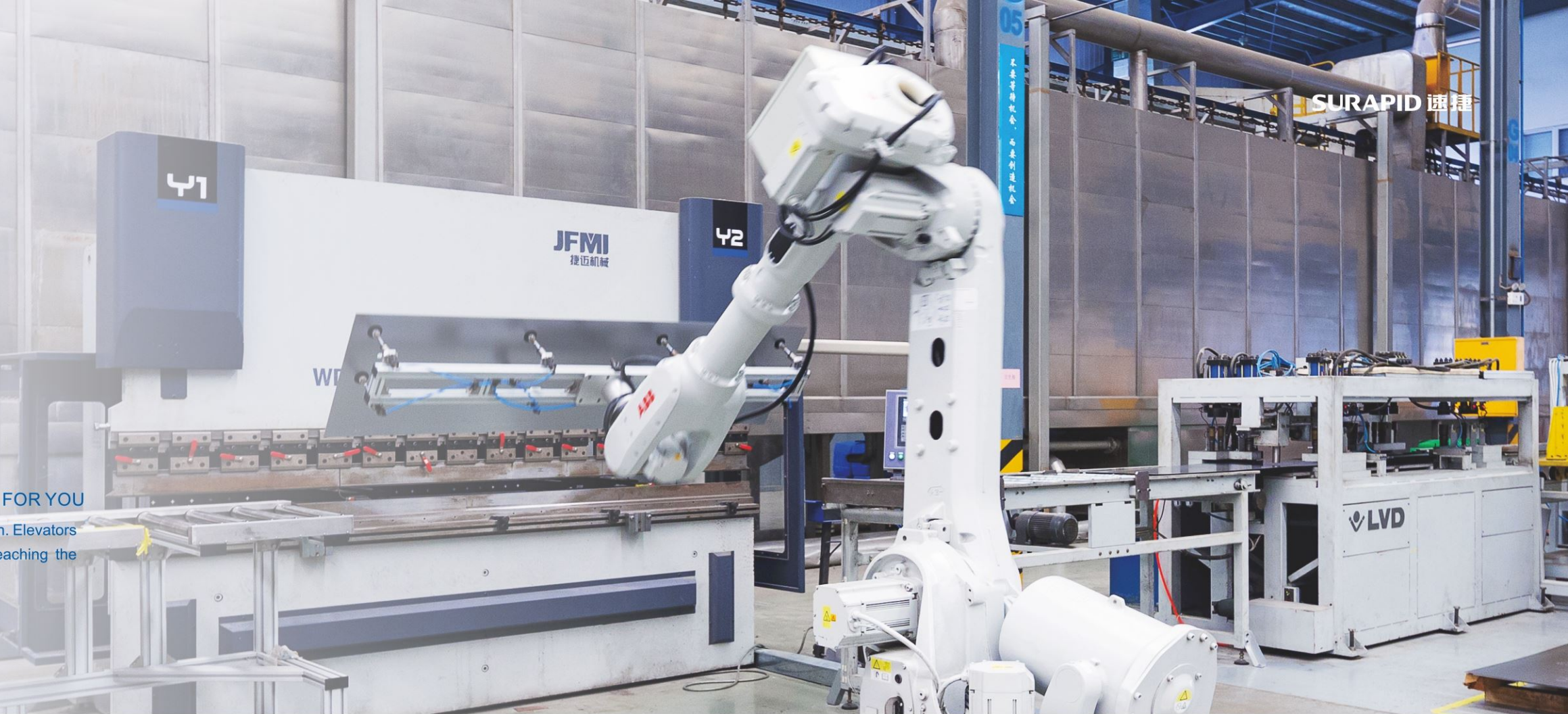


# 智能科技 高效为您输送客流

人生的高度不只是成就，而在于精神层面的提升  
电梯不仅仅在于提升高度，而应更智能化  
速达客梯，是一款智能化享受的典范之作

INTELLIGENT TECHNOLOGY  
CAN EFFICIENTLY TRANSPORT PASSENGER FLOW FOR YOU

The height of life is not only achievement, but also spiritual promotion. Elevators are not only promotion height, but should be more intelligent, reaching the passenger elevator quickly. It is a model of intelligent enjoyment.



## 智能控制系统

控制系统采用专用VVVF系统、模块化全电脑设计结构，确保电梯运行高效、舒适和安全。

### INTELLIGENT CONTROL SYSTEM

The control system adopts a special VVVF system and a modular full computer design structure to ensure efficient, comfortable and safe elevator operation.



### 技术先进

所有控制板、变频器、显示器均自主研发，拥有106项专利  
采用双32位微机一体化控制  
调试简单，并可远程调试  
断电或故障恢复后，自动学习编码器角度  
OMU手持式设备升级  
手机APP调试

### ADVANCED TECHNOLOGY

All control boards, frequency converters and displays are developed independently and have 106 patents.  
Dual 32-bit microcomputer integrated control is adopted  
The debugging is simple and can be remotely debugged.  
Automatically learn encoder angle after power failure or fault recovery  
OMU handheld equipment upgrade  
APP debugging

### 智能工厂

6分钟全智能自动检测控制柜功能，具有产品可追溯性  
防尘等级可高达100000级，精益生产PCB板  
自动化录入、测试，生产过程无人因素影响

### INTELLIGENT FACTORY

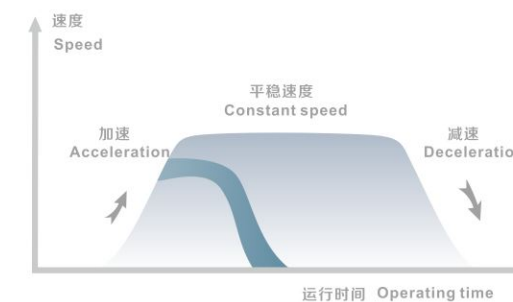
6 - Minute fully intelligent automatic detection control cabinet with product traceability  
Dust - proof grade can reach 100,000 grades, lean production PCB board  
Automatic input and testing, and no human factor influencing the production process

### 品质可靠

出厂前经过100多项严格测试，产品故障率低于0.3%  
可群控8台电梯  
均通过严格的环境、电子、机械及EMC测试

### RELIABLE QUALITY

After more than 100 strict tests before leaving the factory, the failure rate of the product is lower than 0.3 %  
8 elevators can be controlled  
All passed stringent environmental, electronic, mechanical and EMC tests



## “免调试”系统-5分钟调试完成！

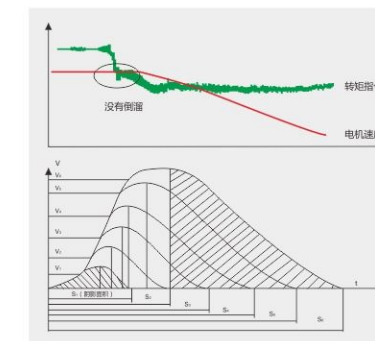
“DEBUGGING - FREE” SYSTEM - 5 MINUTES OF DEBUGGING COMPLETED!



慢车运行—10秒  
Slow train runs for 10 seconds



快车运行—250秒  
Fast train runs for 250 seconds



舒适感调试—40秒  
Comfort commissioning for 40 seconds

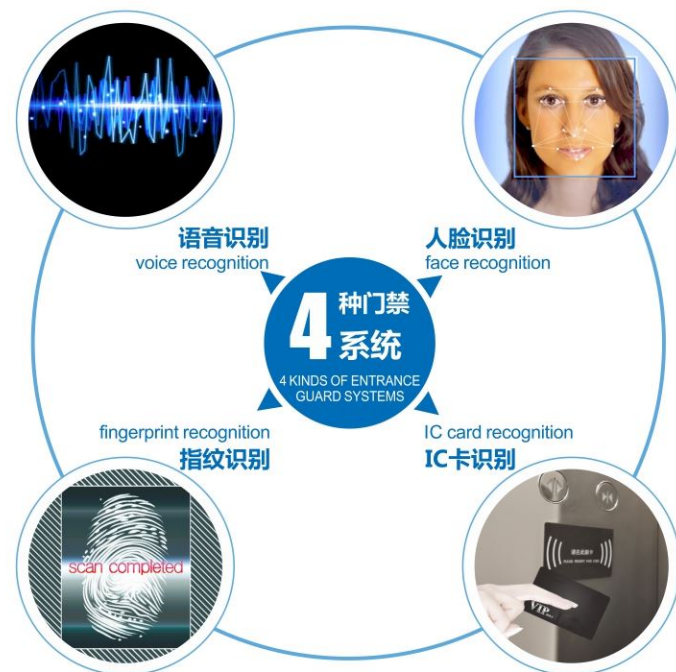


## 门禁系统 ※

门禁系统对电梯的使用加以控制，只有通过识别才能使用此电梯，极大地加强楼宇管理的安全性，让用户更安心。

### ENTRANCE GUARD SYSTEM

The entrance guard system controls the use of elevators. The elevator can only be used after you pass through identification, which greatly enhancing the safety of building management and making users feel more at ease.



## 停电应急疏散装置 ※

当电梯正常运行中突然断电急停时，该装置会迅速动作，驱动电梯低速运行至平层位置，平层后，发出语音提示信息的同时开门疏散乘客。

### ARED-AUTOMATIC RESCUE DEVICE

This device is used for rescue operation in case of power shutdown, it is powered by a rechargeable battery, when a sudden power cut happens, the car will move towards to the near floor keep the door open to the passengers.



## 远程监控管理系统 ※

监控中心通过远程联网实现对电梯的监控、控制、报告及管理电梯关键运行功能，远程实现监控管理，保障电梯使用安全。

### REMOTE MONITORING AND MANAGEMENT SYSTEM

The monitoring center realizes the monitoring, control, reporting and management of the elevator key operation functions through remote networking, realizes remote monitoring and management, and ensures the safety of elevator use.



备注：※ 可选功能 Remark: ※ Optional

# 个性设计 让建筑彰显无穷魅力

让您的建筑空间更加人性化是速捷应尽的责任  
在外观、使用方便性等各个方面都处处为您着想

PERSONALITY DESIGN  
MAKES ARCHITECTURE SHOW INFINITE CHARM

It is the responsibility of SURAPID to make your building space more humane.  
Think of you everywhere in appearance, ease of use and other aspects.

## 可定制轿厢装潢

拥有上百款轿厢装潢供选择，同时可以根据客户的需求做定制开发，让客户享有专属的轿厢设计。

CAR DECORATION CAN BE CUSTOMIZED

SURAPID has hundreds of car decoration options, at the same time; it can make customized development according to the customer's needs so that the customer can enjoy the exclusive car design.

## 防捣乱 ※

为避免恶作剧或错误的轿内指令，电脑通过对载重量进行逻辑判断把不正常的指令作销号处理，使电梯运行和谐、乘坐舒适。

ANTI - DISTURBANCE

In order to avoid prank or wrong instructions in the car, the computer uses logical judgment of the load capacity to pin out the abnormal instructions so as to make the elevator run harmoniously and ride comfortably.

## 通过轿厢受力测试

自主研发轿厢系统，轿厢需进行ANSYS整梯受力分析，并且通过实验塔整梯测试。

PASSING THE CAR STRESS TEST

Self - developed car system, the car needs to carry out ANSYS stress analysis of the whole elevator and pass the test of the whole elevator of the experimental tower.

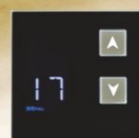
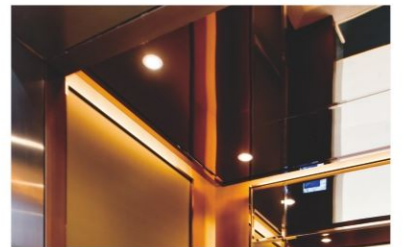
## 无障碍功能包 ※

全面符合GB50763《无障碍设计规范》及欧洲EN81-70标准的要求，为残障人士的乘梯提供更贴心、更安全的服务。

BARRIER - FREE FUNCTION PACKAGE

It fully meets the requirements of GB 50763 "Barrier - Free Design Code" and European EN 81 - 70 standard, and provides more considerate and safer service for the disabled.

备注：※ 可选功能 Remark: ※ Optional



德国IF工业设计大奖  
German IF industrial design award

# MRL PASSENGER ELEVATOR 无机房客梯

## 产品覆盖

载重范围: 630~1600kg  
速度范围: 1.0~1.75m/s

## PRODUCTS COVER

Load: 630~1600kg  
Speed: 1.0~1.75m/s

## 产品配置

主机: 永磁同步无齿轮曳引机  
控制柜: 双32位微机一体化控制柜  
门机: 永磁变频门机  
门保护: 光幕

## PRODUCTS CONFIGURATION

machine: GETM  
Control: Dual 32-bit full digital control  
door: PM  
Door protection: Light curtain

速度(m/s)	630	680	800	900	1000	1150	1350	1600	载重量(kg)
1.75									
1.6									
1.5									
1.0									

## 1 高效节能主机

采用永磁同步无齿轮曳引机, 突破传统设计, 无需励磁, 启动电流小, 传动效率高, 结构更合理。

### EFFICIENT AND ENERGY-SAVING MACHINE

It adopts permanent magnet synchronous gearless traction machine and breaks through traditional design, which does not need excitation, has small starting current, high transmission efficiency and more reasonable structure.

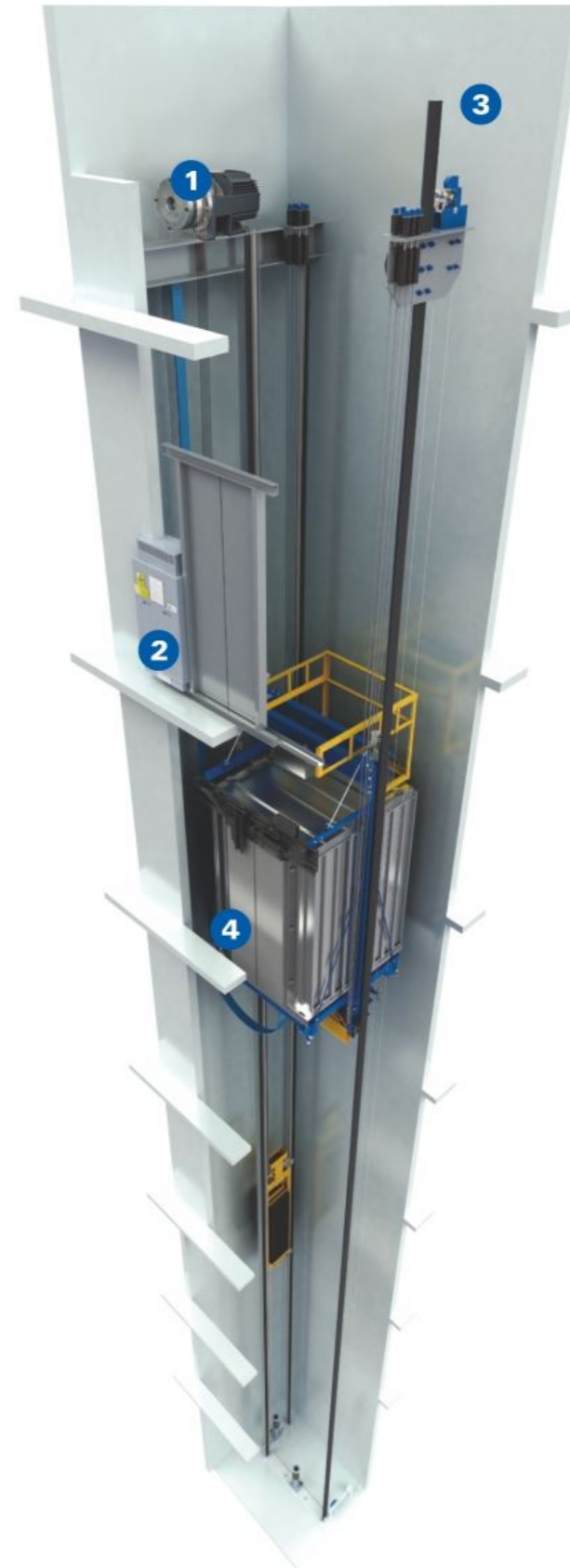


## 2 矢量闭环的微机控制系统

采用双32位中央处理器, 应用多模块协调控制方式, 保证电梯运行更平稳精确和舒适。

### MICROCOMPUTER CONTROL SYSTEM WITH VECTOR CLOSED LOOP

Double 32-bit CPU is used and multi-module coordinated control mode is used to ensure the elevator running more smoothly, accurately and comfortably.



## 3 节省空间

无机房乘客电梯省掉建筑物顶端的机房, 将所有设备都安装在井道内, 节约建筑空间和成本。

### SAVE SPACE

The MRL passenger elevator without machine room at the top of the building and installs all of the equipments in the hoist way, thus, saving the building space and cost.



## 4 多样显示

轿内和厅外显示器均采用液晶显示屏, 图像清晰, 无失真、可视面积大、款式新颖多样。

### DIVERSIFIED DISPLAY

Liquid crystal displays are adopted for both the in-car and out-of-hall, with clear images, no distortion, large visible area and novel and diverse styles.



轿厢装潢 / 人机界面——标配 CAR DECORATION / MAN-MACHINE INTERFACE - STANDARD



轿厢一体顶: XTQ04-254D+亚克力装饰  
 后壁: 发纹不锈钢  
 侧壁: 发纹不锈钢  
 光源: LED  
 地坪: XTQ07-31 B1-7705 (PVC)  
 推荐前壁: 发纹不锈钢

Ceiling integrated with car top: XTQ04-254D+Acrylic  
 Rear wall: Hairline st. steel  
 Side Wall: Hairline st. steel  
 Light: LED  
 Floor: XTQ07-31 B1-7705 (PVC)  
 Recommended front wall: Hairline st. steel



XTQ01-1755(贴膜 选配)  
Optional Film



XTQ01-1705E(贴膜 选配)  
Optional Film

一体式操纵箱 COP



XCP2-A2

显示器 Display



视窗10.4' (6.4' LED显示+亚克力)  
 Display :10.4' (6.4'LED+ Acrylic)

按钮 Button



BS34D(L) 微光

操纵箱标配配置

显示器: 视窗10.4' (6.4' LED显示+亚克力)  
 按钮: 微光, 发纹不锈钢, 发白光  
 操纵箱面板: 发纹不锈钢

Standard decoration of COP

Display :10.4' (6.4'LED+ Acrylic)  
 Button: Hairline st. steel , white light  
 COP: Hairline st. steel

召唤盒 HOP



XHB12-L

显示器 Display



4.3' LED

按钮 Button



BS34F

外召标配配置

液晶屏: 4.3寸BND  
 按钮: 发纹不锈钢效果, 发白光  
 外召面板: 发纹不锈钢

Standard decoration of HOP

Display :4.3' BND  
 Button: Hairline st. steel , white light  
 COP: Hairline st. steel



XHB12-A

吊顶——选配 OPTIONAL CEILING



XTQ04-506D  
喷涂钢板+筒灯  
Painting steel +Lamp



XTQ04-230D  
发纹不锈钢贴面+亚克力+筒灯  
Hairline st. steel + Acrylic + Lamp



XTQ04-23  
镜面不锈钢框架+亚克力透光板  
Decoration Film steel plate+ Acrylic

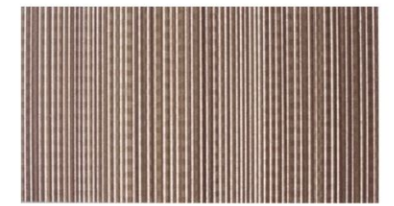
贴膜——选配 OPTIONAL FILM



木纹A  
WoodA



银色方块  
Silver square



深直纹A  
Deep straight linesA

扶手——选配 OPTIONAL HANDRAIL



XTQ06-01



XTQ06-01B



XTQ06-01A



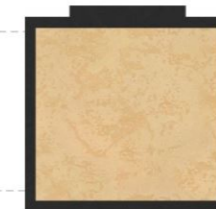
XTQ06-16

地坪——选配 OPTIONAL FLOOR

PVC系列  
PVC series



XTQ07-68

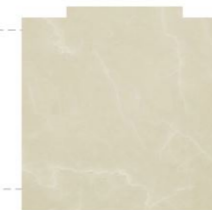


XTQ07-71

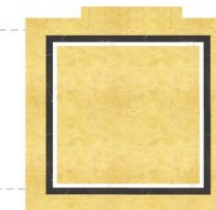


XTQ07-210

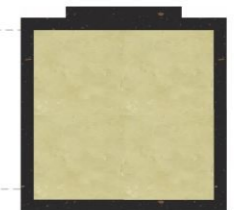
大理石系列  
Marble series



XTQ07-24



XTQ07-1306



XTQ07-23

人机界面——选配 OPTIONAL COP&HOP

召唤盒可选显示器：4.3 寸 TFT  
Optional HOP Display：4.3'TFT



召唤盒可选按钮 Optional HOP Button



触摸按钮 Touch Button

操纵箱 COP: XCP12-A



XHB12-A 镜面不锈钢  
XHB12-A Mirror st. steel

操纵箱可选显示器：7 寸 TFT  
Optional COP Display：7.3'TFT



操纵箱可选按钮 Optional COP Button



BS34E  
触摸按钮 Touch Button  
可选发光颜色：白色  
Optional illuminating color: white

操纵箱 COP: XCP12-A



XHB12-A 钛金镜面不锈钢  
XHB12-A Titanium mirror st. steel

人机界面——选配 OPTIONAL COP&HOP

操纵箱可选面板材料 Optional COP Panel Material  
1、发纹不锈钢 Hairline st. steel  
2、镜面不锈钢 Mirror st. steel  
3、钛金镜面 Titanium mirror

外召可选面板材料 Optional HOP Panel Material  
1、发纹不锈钢 Hairline st. steel  
2、镜面不锈钢 Mirror st. steel  
3、钛金镜面 Titanium mirror

按钮发白光 Button White Light  
可选发光颜色：红色 Optional illuminating color: red

按钮面板材料 ButtonPanel Material  
1、发纹不锈钢 Hairline st. steel  
2、镜面不锈钢 Mirror st. steel  
3、钛金镜面 Titanium mirror

可选召唤款式 Optional HOP: XHB11-C



显示器：XHB11-C(LED 显示)  
按钮：BR36E\BR36E(B) 按钮  
面板：304 不锈钢发纹 / 镜面

Display: XHB11-C(LED Display)  
Button: BR36E\BR36E(B)  
Panel: Hairline st. steel/ Mirror st. steel

操纵箱可选显示器：Optional COP Display



6.4" BND



7" TFT 意浓咖 COFFEE



6.4" STN



10.4" TFT

可选一体式操纵箱 Optional COP



XCP2-E

操纵箱可选按钮  
Optional COP Button



BR34C



BR34C(B)



BS34D



BS34D(B)



XBR27D(K)



XBR27D



XBR27D(B)

轿厢装潢——选配 商务系列 CAR DECORATION—OPTIONAL BUSINESS SERIES



■ XTQ01-1450

吊顶：发丝褐色不锈钢+透光云石  
后壁：发丝褐色不锈钢+发丝褐色不锈钢嵌条  
侧壁：蜂窝大理石+发丝褐色不锈钢嵌条+镜面不锈钢镀钛黑  
地坪：单色石材  
扶手：圈拉丝不锈钢圆管镀古铜  
踢脚线：发丝褐色不锈钢  
推荐前壁：发丝褐色不锈钢

Ceiling: Hairline brown st. steel  
Rear wall: Hairline brown st. steel+ Hairline brown st. steel  
Side Wall: Marble+ Hairline brown st. steel+Mirror st. steel titanium black  
Floor: Monochrome stone  
Handrail: Round st. steel plated bronze  
Skirting line: Hairline brown st. steel  
Recommended front wall: Hairline brown st. steel



■ XTQ01-1379

吊顶：镜面不锈钢+亚克力  
侧壁：镜面不锈钢蚀刻+镜面不锈钢  
后壁：镜面不锈钢蚀刻+镜面不锈钢  
扶手：不锈钢扁扶手  
地坪：单色PVC  
推荐前壁：发纹不锈钢

Ceiling: Mirror st. steel+ Acrylic  
Side Wall: Mirror etched st. steel+ Mirror st. steel  
Rear wall: Mirror etched st. steel+ Mirror st. steel  
Handrail: St. steel flat armrest  
Floor: PVC  
Recommended front wall: Hairline st. steel



■ XTQ01-213-1

吊顶：喷粉钢板框架+亚克力  
后壁：镜面不锈钢蚀刻镀钛黑+和纹不锈钢  
侧壁：镜面不锈钢蚀刻镀钛黑+和纹不锈钢  
地坪：拼花PVC  
建议前壁：和纹不锈钢

Ceiling: Painting steel frame + Acrylic  
Rear wall: Mirror st. steel titanium black+Irregularly-lined  
Side Wall: Mirror st. steel titanium black+Irregularly-lined  
Floor: PVC  
Recommended front wall: Irregularly-lined



■ XTQ01-1403-1

吊顶：镜面不锈钢+云石板  
侧壁：镜面不锈钢+蜂窝大理石+发纹不锈钢嵌条  
后壁：镜面不锈钢+镜面不锈钢蚀刻  
地坪：单色石材  
扶手：发纹不锈钢扁扶手  
踢脚线：发纹不锈钢

Ceiling: Mirror st. steel+Marble slab  
Side Wall: Mirror st. steel+ Marble+Hairline st. steel  
Rear wall: Mirror st. steel+Mirror etched st. steel  
Floor: Monochrome stone  
Handrail: Hairline st. steel flat armrest  
Skirting line: Hairline st. steel

轿厢装潢——选配 酒店系列 CAR DECORATION—OPTIONAL RESIDENTIAL SERIES



■ XTQ01-1370

轿厢一体顶：喷粉钢板/亚克力装饰条/镜面不锈钢  
后壁：镜面不锈钢蚀刻  
侧壁：镜面不锈钢蚀刻/长发纹不锈钢  
扶手：圈拉丝不锈钢圆管  
地坪：拼花PVC  
推荐前壁：长发纹不锈钢

Ceiling: Painting steel+Acrylic+Mirror st. steel  
Rear wall: Mirror etched st. steel  
Side Wall: Mirror etched st. steel+ Hairline st. steel  
Handrail: Round st. steel  
Floor: PVC  
Recommended front wall: Hairline st. steel



■ XTQ01-1370-1

吊顶：喷粉钢板+亚克力装饰条+镜面不锈钢  
后壁：镜面不锈钢蚀刻  
侧壁：长发纹不锈钢+镜面不锈钢  
扶手：圈拉丝不锈钢圆管  
地坪：拼花石材  
推荐前壁：长发纹不锈钢

Ceiling: Painting steel+Acrylic+Mirror st. steel  
Rear wall: Mirror etched st. steel  
Side Wall: Hairline st. steel+ Mirror st. steel  
Handrail: Round st. steel  
Floor: Parquet stone  
Recommended front wall: Hairline st. steel



■ XTQ01-1376

吊顶：长发纹不锈钢+亚克力  
后壁：镜面不锈钢蚀刻+镜面不锈钢  
侧壁：长发纹不锈钢  
扶手：圈拉丝不锈钢  
地坪：PVC  
推荐前壁：长发纹不锈钢

Ceiling: Hairline St. Steel+ Acrylic  
Rear wall: Mirror etched st. steel+ Mirror st. steel  
Side Wall: Hairline st. steel  
Handrail: Round st. steel  
Floor: PVC  
Recommended front wall: Hairline st. steel



■ XTQ01-1406

吊顶：镜面不锈钢框架+亚克力  
后壁：长发纹不锈钢镀钛黑+镜面不锈钢嵌条  
侧壁：长发纹不锈钢镀钛黑+镜面不锈钢+镜面不锈钢嵌条  
扶手：圈拉丝不锈钢圆管  
踢脚线：长发纹不锈钢镀钛黑  
地面：单色石材  
推荐前壁：镜面不锈钢

Ceiling: Painting steel frame+ Acrylic  
Rear wall: Mirror st. steel titanium black+Mirror etched st. steel  
Side Wall: Mirror st. steel titanium black+Mirror st. steel+Mirror etched st. steel  
Handrail: Round st. steel  
Skirting line: Mirror st. steel titanium black  
Floor: Monochrome stone  
Recommended front wall: Mirror st. steel

※ 图片仅供参考，以实物为准 Picture for reference only

# 功能表 FUNCTION TABLE

## 运行功能 Operating function

全集选 Complete set selection	电梯对大楼内上、下召唤信号、轿内选层指令及各种信号进行综合分析判断后，将自动优选与电梯运行方向一致的信号进行依次应答。 After the elevator carries out comprehensive analysis and judgment on the upper and lower call signals in the building, the floor selection instruction in the car and various signals will automatically select signals consistent with the running direction of the elevator to answer in sequence.	●
满载直驶 LNS-Load Non Stop	当轿厢内载荷达到满载预设值时，即进入满载直驶状态，电梯将不再应答厅外召唤，点亮厅外显示的满载灯，并直接响应轿内指令直达指定楼层。 When a car is loaded to a predetermined percentage of its capacity, it is considered "full".The car will bypass further hall calls.Additional passengers would be unable to enter.	●
重新初始化运行 Reinitializing operation	当电源因中断而恢复后，电梯位置信号未能保留或不能确定轿厢位置时，电梯将驶向端站重新定位。定位后位置显示器显示电梯所在的楼层位置，并恢复正常运行。 When the power supply is restored due to interruption and the elevator position signal cannot be retained or the car position cannot be determined, the elevator will move to the end station for repositioning. After positioning, the position indicator displays the floor position where the elevator is located and resumes the normal operation.	●
修正运行 Corrected operation	电梯在运行过程中，系统自动修正电梯运行中产生的导致微小平层误差、轿厢位置误差、将平层误差控制在最小的范围内。 During the operation of the elevator, the system automatically corrects the small leveling error, car position error, and controls the leveling error to the minimum range generated during the operation of the elevator.	●
井道位置自学习 Shaft position self-learning	有井道位置自学习功能，并储存井道位置信号，当电梯正常运行时实现直接停靠。 It has a shaft position self-learning function and stores shaft position signals to realize direct parking when the elevator is in normal operation.	●
板载调试 Onboard debugging	调试人员可以通过控制板上下键盘操作，来实现对电梯运行状态监控及参数设置等调试功能。 Debugging personnel can realize debugging functions such as elevator running status monitoring and parameter setting through keypad operation on the control panel.	●
反向指令自动消除 Automatic elimination of reverse command	在向上或者向下运行时，对于与当前运行方向相反的指令可自动消除。 When the first of last landing is reached and elevator has to reverse, all commands originally registered will be eliminated.	●
错误指令取消 CBC-Cancel Error Calls	当指令登记后，在电梯未启动前可通过连续点此按钮以取消已登记的指令。电梯启动后，为保证乘客的人身安全，系统不允许取消已登记的信号。 Before the car starts, the registration of a car or operation can be cancelled by double click of this button.After the car starts registration cancel will not allowed for the sake of passengers safety. The function can be made available by parameter setting.	●
关门等待取消 ADC-Advanced Door Closing	自动状态下，在门保持全开状态并且处于开门延时阶段时，按关门按钮可立即执行提前关门。 When the door is fully open and under the door hold period on normal running, push the door close button can close the door in advance.	●
开、关门按钮 DOB/DCB-Door Open/Close Button	电梯轿厢操纵面板上设有控制开关门的微动按钮，以便乘客根据需要灵活掌握开关门的时间。 The door open/close button in car operation panel permits to open/close an automatic door, and to keep it open by constant.	●
开、关门按钮灯 DOBL/DCBL-Door Open/Close Button Light	按下开、关门按钮的同时将点亮按钮灯以提示成功应答。 Door Open/Close button will be heighted if the buttons are pressed.	●
厅、轿门分别控制 Separate control DHT of car and landing door	经过统计由厅外召唤引起的开门等待时间会比轿内指令引起的开门等待时间要长，此功能通过独立调整电梯在响应召唤盒指令时的开门保持时间，来提高整体的运行效率。 The waiting time caused by hall call is longer than car call according to statistics, this function to improve the efficiency through independent adjust the door open holding time.	●
本层厅外开门 Door Re-opening	在正常关门过程中，厅外与电梯同向的召唤被按下时，电梯将重新开门。 During normal door closing, when call button that indicates the direction consistent to current running direction is pressed in hall,door will be re-opened.	●
自动返回基站 Automatic return to base station	单台电梯时，可根据大楼实际需求设定运行基站，在预定时间内如果没有召唤或指令登记，轿厢将自动返回基站，关门待机，基站一般设在交通流量大的楼层或者一楼大厅。 When a single elevator is used, the operating base station can be set according to the actual demand of the building. If there is no call or instruction registration within a predetermined period of time, the car will automatically return to the base station, close the door and stand by. The base station is usually located on the floor or the lobby on the first floor where traffic flow is large.	●
轿顶检修运行 TCI-Top of Car inspection	电梯轿顶设有检修箱，使检修维护更为安全快捷。 Inspection box is provide on the top of car, safer and easier for maintain.	●
启动时力矩补偿 Torque compensation on starting	为使电梯启动时获得更好的舒适感，系统对轿厢内载荷进行计算，并通过启动时的力矩补偿给予优化。 To make the elevator more comfortable, system calculate the load in car, optimize it through compensating the torque on starting.	●
反向指令不登记功能 Reverse instruction non-registration function	在向上或者向下运行时，对于与当前运行方向相反的指令可设置为无法登记。 When running up or down, instructions that are opposite to the current running direction can be set to fail to register.	●
免定位 No positioning	驱动器在断电、参数更改、发生故障的情况下，再次运行前会自动磁极捕捉，无需人为干预定位。 Under the condition of power failure, parameter change and failure, the drive will automatically capture magnetic poles before running again, and no human intervention is needed for positioning.	●

电流斜坡撤除 Removal of current ramp	在永磁同步电机应用现场中，电梯运行减速停梯后，电机的维持电流通过斜坡的方式撤除，避免这个过程中电机的异常噪音。 In the application site of permanent magnet synchronous motor, the holding current of the motor will be removed by the ramp after the elevator runs to slow down and park the elevator, so as to avoid abnormal noise of the motor during the process.	●
外召粘连识别 External call adhesion identification	系统可以识别出厅外召唤按钮的粘连情况，自动去除该粘连的召唤，避免电梯由于外召按钮的粘连情况而无法关门运行。 The system can identify the adhesion of the call button outside the hall, automatically remove the call of the adhesion, and prevent the elevator from being unable to close the door due to the adhesion of the external call button.	●
检修降载波 Maintenance the reduction carrier	在满足电梯运行的基本功能条件下，为了最大程度保护驱动器底座，增加一种运行模式，即在检修运行时载波频率自动调节到6KHz。 In order to protect the driver bed plate to the greatest extent under the condition that the basic function of elevator operation is met, an operation mode is added, that is, the carrier frequency is automatically adjusted to 6 KHz during maintenance and operation.	●
检修零速停梯 Overhaul of zero-speed elevator parking	大大减少了检修非零速停梯对主机制动器造成的磨损。 Greatly reduces the wear off caused by overhaul of non-zero-speed parking elevator to the mainframe brake.	●
轿厢到站钟 Car arrival bell	设置在轿厢顶部，当电梯到达停靠楼层时，将发出清脆的铃声提示乘客已到达。 Set at the top of the car, when the elevator reaches the park floor, it will sound a ringing bell to remind the passengers that they have arrived.	●
提前开门 Open the door in advance	当电梯运行接近门区位置时，在符合安全的条件下，电梯会提前开门并低速蠕行至平层位置。 When the elevator runs close to the door area, the elevator door will be opened in advance and creep to the level position at low speed under the condition of safety.	●
自动再平层 Automatic at leveling	当由于进出乘客等原因引起负载变化使轿厢地坎与层门地坎的误差超过一定值时，电梯将会自动执行再平层，使轿厢回到准确的平层位置。 When the error between car sill and landing door sill exceeds a certain value due to load changes caused by passengers entering and leaving the car, the elevator will automatically perform leveling and return the car to the accurate leveling position.	○
并联/群控功能 Parallel / group control function	该功能用于两台及两台以上同型号电梯成组控制时使用，使梯群能自动选择最合适的应答，避免电梯重复停梯，缩短乘客候梯时间，提高运行效率。 It is used for group control of two or more elevators of the same type, so that the elevator group can automatically select the most suitable response, avoid repeated elevator parks, shorten the waiting time of passengers, and improve the operation efficiency.	○
开门保持按钮 Open door hold button	在进入轿厢乘客较多，需延长开门时间时，可操作操纵面板上的开门保持按钮。对于群控系统而言，当某一电梯进入开门保持状态时，系统会自动把分配给此梯的外呼信号转给其他电梯处理。 When there are many passengers entering the car and the opening time needs to be extended, the open door hold button on the control panel can be operated. As for the group control system, when an elevator enters the open door holding state, the system will automatically transfer the outgoing call signal assigned to the elevator to other elevators for processing.	○
爬行启动  Creep starting	克服静摩擦，使启动舒适更佳。 Overcoming static friction to make starting more comfortable.	●
平衡系数辅助监测  Auxiliary monitoring of balance coefficient	做平衡系数时，自动观察中间楼层信息并输出电流信号，显示在服务器或主板LED上，方便工地调试。 When doing the balance coefficient, automatically observe the information of the middle floor and output current signals, which are displayed on the server or main board led to facilitate site debugging.	●
楼层显示一键排序  One - key sorting of floor display	设置轿内外显示器楼层信息时，将底层显示值设置完毕后，其他楼层会自动排列设置，便于工地操作。 When setting the floor information of the display inside and outside of the car, after setting the display value of the bottom floor, the other floors will be arranged and set automatically, which is convenient for site operation.	●

## 安全功能 Security function

超载保护 LWS-Overload Protection	当轿厢的载重量超出额定允许的载重时，超载蜂鸣器会鸣响以提示超载。此时显示超载，轿厢不关门，电梯不能启动。 If the load exceeds the rate load, the sound signal will be given out by speaker, and "OVERLOAD" will be displayed,the car door will not close, the elevator will not start.	●
主机过热保护 Machinery Overheat Protection	由于机房温度过高或运行发热，电机温度超过预设值时，电梯会自动进入保护状态。电梯就近停靠，开门安全疏散乘客并关闭轿内照明和电扇，温度正常后电梯恢复正常运行。 Self- protection mode will be achieved if the temp of the motor exceeds the preset value due to the heat made by motor itself or the high temp in the environment.The car stops at the nearest floor,unload and shut down the light and ventilation device,once the temp falls down to normal, the car will recover.	●
轿厢开门保护 DTO-Door Time Protection Open	当电梯由于机械卡阻等原因导致不能开门到位超过预定时间时，内外呼信号会自动取消，驶向相邻楼层开门并释放乘客。 If the car door does not open completely within an adjustable time after the door open command, car call and hall call signals will be automatically cancelled, and elevator will stop at the next floor and open its door.	●

● 标准 ○ 可选



轿厢关门保护 Car door closing protection	当电梯由于机械卡阻等原因导致不能关门到位超过预定时间，电梯重复三次关门后，未监测到门关闭信号，电梯会自动进入保护状态，当电梯监测到门已正常关闭时，电梯将恢复正常操作。 When the elevator cannot close the door for more than the predetermined time due to mechanical blocking and other reasons, after the elevator closes the door repeatedly for three times, no door closing signal is detected, and the elevator will automatically enter the protection state. When the elevator detects that the door has been normally closed, the elevator will resume normal operation.	●
轿厢关门延时保护 DTC-Door Time Protection Close	当电梯开门时间由于外呼按钮被卡主或其他因素而超过预定时间时，电梯会强迫关门来应答其他型号。当电梯强迫关门重复几次仍未关紧，电梯将停止运转并开门，内外呼信号会自动取消。当电梯监测到门已正常关闭时，电梯恢复正常操作。 If the car door does not close completely within an adjustable time after the door close command, after three unsuccessfully retries, the elevator will automatically enter protection state. When normal door closing is detected, elevator will recover to normal running.	●
关门力矩保护 Door closing torque protection	当关门时收到反向阻力，超过预设的力矩值时，电梯将重新开门。 When the opposite resistance is received when closing the door, the elevator will reopen the door when the preset torque value is exceeded.	●
光幕门保护 Light Curtain Protection	利用光幕装置发出的红外线对进入其探测区域的任何物体进行扫描，形成一个敏感度高，安全性好的红外线屏。一旦光线受到干扰，轿门就很快地重新开启而不会碰上乘客。 Light Curtain acts if there is any obstruction between dooe panets.the door will be reopened.	●
故障自诊断 Fault self Diagnosis	控制系统自动监测到控制回路异常时，自动停梯保证乘客的安全。 When control circuit abnormal is detected,automatic stop the elevator to ensure the safe of passenger.	●
电网滤波监测功能 Grid filter monitoring	一段时间内如果电网电压出现连续波动，系统将自动报警。 If the voltage fluctuate continuously in one period,system will auto alarming.	●
速度反馈检测功能 Speed Detection	系统一旦检测到实际速度与给定速度不符，将自动断开安全电路并发出警报。 Once the system detect the actual running speed is unconfornity with the preset speed,will shut off the safety circuit automatically and alarming.	●
抱闸反馈检测功能 Brake Feedback & Delection	对抱闸继电器信号进行全程监控，当发现抱闸继电器的实际状态与始定的命令不符时，停止运行。 Brake relay signal is always monitored.If nonconformity of actual state of brake relay with preset command is found,running will be stopped.	●
接触器反馈检测功能 Contactor feedback detection function	无论电梯处于待机状态还是运行状态，系统将检测输出继电器的状态，一旦发现接触器处于非正常状态，系统将报警。 Whether the elevator is in standby state or running state, the system will detect the state of the output relay. Once the contactor is found to be in abnormal state, the system will alarm.	●
门锁短接检测 <span style="color:red">新</span> Door lock short connection detection	电梯系统可自动检测出门锁短接状态，并报故障保护。 The elevator system can automatically detect the door lock short connection status and report the fault protection.	●
门旁路装置 <span style="color:red">新</span> Door bypass device	为了配合电梯检修需要，可通过特有的旁路装置短接厅门锁或者轿门锁，短接后电梯仅能检修操作或紧急电动运行，且运行时有声光报警系统提示。 In order to meet the needs of elevator maintenance, the hall door lock or car door lock can be shorted through a special bypass device. After the short connection, the elevator can only be operated by maintenance or emergency electric operation, and there is an audible and visual alarm system when the elevator is in operation.	●
UCMP功能 <span style="color:red">新</span> UCMP:	防止轿厢在开锁区域内且开门状态下无指令意外移动的保护功能。 When the elevator is in leveling and the door is open, elevator detects unexpected move, UCMP security device immediately, stop the elevator.	●
终端楼层保护 <span style="color:red">新</span> NTSD-End Protection	当电梯运行到终端楼层时，运行速度没有减速度预设值时，系统将强迫减速，保护电梯的安全运行。 Both upper and lower terminal of elevator are equipped with terminal speed reducing awitch and terminal limit switch,if the speed is not slowed to the preset value while the cat reach the end floor,a forced deceleration will be carried out by system in order to protect the safety of the car.	●
抱闸力矩检测 <span style="color:red">新</span> Brake torque detection	系统可自动或手动检测制动器力矩的功能。 The system can automatically or manually detect brake torque.	●

## ▼▲ 人机界面 Human-computer interface

厅外及轿内方向灯提示 Direction pilot light outside the hall and inside the car	为方便乘客了解电梯的运行方向，在轿内操纵面板和厅外召唤面板上有箭头状指示灯提示运行方向。 In order to facilitate passengers to understand the running direction of the elevator, arrow-shaped indicator lights are arranged on the control panel inside the car and the calling panel outside the hall to indicate the running direction.	●
数字式大厅/轿内显示 <span style="color:red">新</span> 16 digital display	在轿内的操纵面板及每层楼的大厅召唤盒上用十六断数码显示电梯所在的楼层。 COP&HOP display is LCD.16 digital display.	○
数字液晶式大厅/轿内显示 LCD display	在轿内的操纵面板及每层楼的大厅召唤盒上用液晶数字显示电梯所在的楼层。 COP&HOP display is LCD.	○

彩色液晶式大厅/轿内显示 BND display	在轿内的操纵面板及每层楼的大厅召唤盒上用高档彩色液晶显示电梯所在的楼层。 COP&HOP display is BND.	○
厅外到站灯/钟 Car arrival gong	安装在电梯厅外，通过上下指示灯及内置音频装置，提醒乘客电梯即将到站。 During speed reduction and leveling, arrival gong on car top sounds to inform passengers and waiters of leveling and arriving.	○



## 应急功能 Emergency function

机房紧急电动运行 Emergency electric operation of the machine room	电梯机房的控制柜内设有紧急电动操作装置，可用紧急情况时的救援。 The control cabinet of the elevator machine room is equipped with an emergency electric operation device, which can be used for emergency rescue.	●
轿厢内紧急照明 Emergency lighting in car	在轿内设置的紧急照明装置，停电时启用。 The emergency lighting device set up in the car is activated when power is cut off.	●
轿厢警铃 ALARB-Alarm Bell	特殊情况下乘客通过按动轿厢内报警的按钮，及时通知外界。 An alarm sound signal will be given out to the outside in specific conditions.	●
内部通话装置 Internal communication device	特殊情况下通过设置在轿厢操纵箱面板、轿顶、轿底上的对讲装置保持与机房及控制中心的语音联系。 Under special circumstances, voice communication with the machine room and the control center is maintained through the intercom device arranged on the car control box panel, car top and car floor.	●
消防状态提醒显示 Fire display	进入消防状态时，在轿内显示提示信息。 Three is display inside of the car when the lift enter into fireman operation.	●
紧急消防操作 Emergency fire fighting operation	大楼发生火灾警时，系统在接收到火警信号后，将取消所有指令和召唤信号，驱动电梯直接返回消防层，开门疏散乘客。在消防迫降基站成功后，控制系统向消防中心提供迫降成功信号，同时又消防状态提醒显示。 In case of fire alarm in the building, the system will cancel all instructions and call signals after receiving the fire alarm signal, drive the elevator to return to the fire fighting floor directly and open the door to evacuate passengers. After successfully landing the base station, the control system will send the landing success signal to the fire control center, and at the same time, the fire status reminder displays.	●
紧急消防员服务 EFO-Emergency Fireman Operation	当电梯完成消防迫降操作，返回消防通道层并疏散乘客后，电梯自动进入独立服务状态供消防员使用。 Upon recognition of fireman's service, a car shall return non-stop to the designated return landing and park with the doors fully open.	○
紧急电源操作 EPO-Emergency Power Operation	断电时，电梯接到客户的应急电源后，群组中的电梯轿厢逐一运行到指定（或下一层）层站，开门疏散乘客，并根据用户的需要，可指定群组中的某些电梯处理正常服务运行；电源正常后，所有电梯自动恢复到正常运行状态。 In case that regular power supply shuts down, the power supply of cars turns to Emergency Power; then cars in group except cars in inspection mode run to defined landing(or next landing)one by one. After arrival to rescue position, the cars open doors and let passengers out. It's available to define a part of cars in group for normal service during EPO which is needed by some users. The return to full normal operation is done automatically when regular power supply is reestablished.	○
停电应急疏散装置 ARED-Autimatic Rescue Device	当电梯正常运行中突然断电急停时，该装置会迅速动作，驱动电梯低速运行至平层位置，平层后发出语音提示信息的同时开门疏散乘客。 This device is usef for rescue operation in case of power shutdown, it is powered by a rechargeable battery, when a sudden power cut happens, the car will move towards to the near floor keep the door open to the passengers.	○
集成ARD功能 Integrated ARD function	电梯停电时，可通过外接UPS设备，使得轿厢运行到下一层站开门疏散乘客；电梯电源正常后电梯自动恢复到正常运行状态。 When the elevator is out of power, the car will run to the next floor station to open the door and evacuate passengers through the external connection UPS equipment. After the elevator power supply is normal, the elevator will automatically return to normal operation.	○
集成HSD功能 Integrated HSD function	电梯停电时，外接UPS设备作为系统的工作电源，通过点动松开主机抱闸使得轿厢往轻载方向溜车运行到下一层站开门释放乘客。 When the elevator is out of power, external connection UPS equipment will be used as the working power supply of the system, and the main brake will be released electrically to allow the car to slip in the direction of light load and run to the next floor station to open the door to release passengers.	○
自平层运行 <span style="color:red">新</span> Self-leveling operation	电梯因故障或者检修运行停止在非平层区域时，故障复位或由检修转入正常状态，此时只要符合启动的安全要求，电梯将以慢速运行到平层区。门自动打开恢复正常运行，同时对乘客进行语音安抚。（语音安抚装置为选配功能）。 When the elevator parks in the non-leveling area due to a fault or maintenance operation, the fault will reset or the maintenance will turn to the normal state, at this time, as long as the safety requirements for starting are met, the elevator will move to the leveling area at a slow speed. The door opens automatically to resume normal operation while comforting the passengers. (voice soothing device is optional).	●
平层扒门功能 <span style="color:red">新</span> Leveling digging up function	由于任何原因电梯停在开锁区域，可以在轿厢内手动打开轿门和层门，或者用三角钥匙开锁打开轿门和层门。 For any reason the elevator parks in the unlocking area, the car door and leveling door can be opened manually in the car, or the car door and leveling door can be opened by unlocking with a triangular key.	●



## 节能功能 Energy saving function

轿内风扇照明控制 FLP-Fan and light protection	在没有接到任何操作指令的情况下，电梯在关门后的预定时间内，将进入节能模式，关闭轿内的风扇和照明。 Elevator will enter energy saving mode under no operation, turn off the car light and fan automatically within present time after door closing, and resume after new command is received.	●
照明、风扇节能模式 Lighting fan power saving mode	当超过设定时间仍无内部指令和层站召唤时，则主动切断轿厢内照明、风扇等电源。 When there is no internal command or landing call beyond the set time, the power supply such as lighting, fans and the like in the car will be cut off actively.	●

● 标准 ○ 可选

停梯开关 Stop switch: i.e. parking switch	即驻停开关, 当设置在指定楼层的钥匙开关动作后, 电梯将在应答完所有指令后返回指定楼层, 同时将启用节能模式, 切断轿厢内照明并点亮厅外停梯开关指示灯。 When the key switch set on the designated floor is activated, the elevator will return to the designated floor after answering all instructions, at the same time, the energy saving mode will be enabled, the lighting in the car will be cut off and the parking switch indicator outside the hall will be lit.	●
驱动器风扇 智能控制 Fan speed adjustable	根据驱动温度, 实时控制风扇转速和时间, 优化风扇噪音以及节能。 The drive fan speed of the controller can be adjusted, adjustable range 0-100% speed, default 100%, can effectively reduce the noise when necessary.	●

## 特殊运行 Special operation

司机操作 ATT-Attendants Service	通过操作操纵箱内开关进入有司机操作状态, 可由司机对轿厢乘客数量、厅外召唤响应、开关门等进行管理。 The Attendant Operation feature allows semi-automatic operation with manual control through the switch in COP.	●
司机友好提醒 Reminding for Attendant	当电梯处于司机状态, 厅外有召唤登记时, 所对应的轿内按钮灯闪烁, 友好提醒司机。 When hall call is registered under ATT, corresponding command lamp will flash to remind attendant to learn situation of such registration.	●
司机直驶 Attendant Bypass	进入司机状态后按住操纵箱内NSB按钮, 电梯不响应外召, 直接驶向目的楼层。 In state of attendant operation, if the button NSB in COP is pressed, elevator will not answer to hall call and directly run to destination floor.	○
下集选 Lower selective collective	电梯只在底层或者基站设有上行外呼按钮, 其他楼层只有下行外呼按钮; 电梯对大楼内的厅外召唤信号和轿内指令信号进行综合分析判断后, 将自动优选与电梯运行方向一致的信号来进行依次应答。 The elevator is only equipped with an uplink outbound call button on the ground floor or the base station, while the other floors are only equipped with a downlink outbound call button. After the elevator makes a comprehensive analysis and judgment of the hall call signal and the car command signal in the building, it will automatically select signals that are consistent with the elevator's running direction to answer in sequence.	○
自动泊梯 Escalator	群控组内电梯在大楼内所有电梯均处于空闲状态时, 会自动停泊在大楼的不同层楼以提高电梯组对召唤的响应速度。 When all elevators in the group control are idle, they will automatically park on different floors of the building to improve the response speed of the elevator group to the call.	●
防捣乱保护 ANS-Anti-Nuisance Car Call Protection	为避免空梯运行, 电梯通过对载重进行逻辑判断把不正常的指令做消号处理。 If there is only one passenger in the car, and an excessive number of calls is registered, nuisance is detected and car calls will be cancelled, requiring registration of proper of calls.	○
防犯罪保护 Anti-crime protection	通过参数设置或触发外部开关, 使电梯进入防犯罪模式, 电梯将在经过预先设定层楼时, 在该楼层停靠并开门接受警卫或接待员检查。 Through setting parameters or triggering external switches, the elevator will enter anti-crime mode. When passing through a preset floor, the elevator will park at that floor and open the door for inspection by guards or receptionists.	○
密码层服务 Password Floor Service	轿内按钮设定密码对大楼内特定楼层进行权限管理, 对大楼内人员的出入进行管理。 The special floor can be set the password through the button in car.	○
智能IC卡系统 Intelligent IC card system	通过轿内和厅外读卡系统对特定楼层进行权限管理, 对人员出入电梯进行智能管理, 此功能仅对电梯有效, 不能与大楼其他IC卡管理集成。 The card reading system inside the car and outside the hall manages the authority of a specific floor and intelligently manages the access of personnel to and from the elevator. This function is only valid for the elevator and cannot be integrated with the management of other IC cards in the building.	○
地震操作 Earthquake operation	大楼发生地震时, 系统在接收到地政信号后, 将取消所有指令和召唤信号, 电梯在最近的楼层开门疏散乘客并停梯。用户需提供地震动作信号。 When an earthquake occurs to the building, the system will cancel all instructions and call signals after receiving the land administration signal, and the elevator will open the door at the nearest floor to evacuate passengers and park the elevator. Users need to provide seismic action signals.	○
餐厅等待 Restaurant waiting	为餐厅等人流量大的楼层分配较长的开门时间, 以满足额外的客流量。 Allocate a longer opening time for the floors with large flow of people such as restaurants to meet the extra passenger flow.	○
过站提示 Over Station Warning	电梯过站时通过蜂鸣器向乘客提示层站通过, 为盲人等特殊乘客提供服务。 Elevator will remind the passenger through buzzer over station, provide special service for blind passenger.	○
定时开关机 Time Setting	启用此功能后电梯将实现定时开关机, 对电梯锁梯进行自动控制。 Time setting to auto control the elevator.	○
语音播报模块 Voice broadcast module	电梯在减速平层过程中会用语音播报即将停靠的层站, 提醒乘客注意。 The elevator will use voice to broadcast the landing park to remind passengers to pay attention to it during the course of deceleration leveling.	○
语音安抚 VOICE CALM	电梯故障时, 对轿厢内乘客进行语音安抚。 Auto playing a voice when elevator emergency stop by fault.	○

电梯专用空调 Air Condition	专门针对轿厢内空气调节设计, 为独立循环系统, 通过冷凝水自动雾化、超水位自动切换工作模式及水位极限保护、空气净化等功能调节, 使轿厢内的空气温度、湿度、洁净度和气流速度等参数保持在人体舒适的范围之内, 营造轿厢内清凉空间。 Adjust the air in cabin, including temperature, humidity and cleanliness, to make a comfortable environment.	○
检修免干扰功能 Maintenance interference-free function	当电梯处于检修模式时, 厅外不显示; 当有人按住外召时, 显示当前层的楼层, 松开按钮后不显示。该功能在电梯维保时免受不知情乘客的干扰。 When the elevator is in maintenance mode, it is not displayed outside the hall. When someone presses the outside call, the floor of the current floor will be displayed, and it will not be displayed after the button is released. The function protects the elevator from being disturbed by uninformed passengers during maintenance.	○
独立服务 Independent service	为满足客户的特殊需要, 设计独立服务状态, 进入独立服务后, 电梯不再应答厅外召唤信号而只能由人工控制开关门和运行。 In order to meet the special needs of customers, the independent service status is designed. After entering the independent service, the elevator will no longer respond to the call signal outside the hall but will only be manually controlled to open and close the door and operate.	●
独立VIP功能 VIP PRIVATE SERVICE	启用该功能后电梯为乘客专用, 厅外不显示但是轿内显示正常, 使得乘客到达楼层信息保密。 Intelligent VIP information system, Keep private and safely service for VIP.	○
超载保留呼梯指令 Overload reservation call order	超载保护模式下, 可保留已登记的呼梯指令不取消。 In overload protection mode, the registered call order can be reserved and the order can be retained without cancellation.	○
门保持优化 Optimization of door keeping	当电梯重新开门时, 取消开门保持时间, 直接关门操作, 提高效率。 When the elevator reopens the door, cancel the time to keep the door open, directly close the door and improve the efficiency.	○
复位救援功能 Reset rescue function	系统因故障导致位置信号丢失, 电梯将先救援运行到就近楼层停靠并疏散乘客, 再去站复位。 When the elevator position (including blind or through door) is lost, it will automatically enter the recovery mode to run to the nearest floor, open the door and release the passengers, and then run to the end station for restoration.	●
派梯预提示 Elevator dispatching pre-warning	通过厅外到站灯的显示, 指示乘客乘坐对应电梯, 方便候梯。 Indicating passengers to take the corresponding elevator through the display of the arrival light outside the hall, so as to facilitate waiting.	○
超载保留呼梯指令 Overload reservation call order	超载保护模式下, 可保留已登记的呼梯指令不取消。 In overload protection mode, the registered call order can be reserved and the order can be retained without cancellation.	○
防水探测触点 Waterproof detection contact	当该触电被触动, 为防止轿厢或对重与水接触, 轿厢将不服务顶层和底层。 When the electric shock is touched, to prevent the car or counterweight from contacting with water, the car will not serve the top floor and the bottom floor.	○
上交通高峰服务 Rush hour service	专门用来缓解大楼内的交通高峰, 在上高峰时, 所有投入服务的电梯在大楼的载客量达到预设值 (一般是满载) 后, 就立即启动运行, 并在高峰期间一直保持该模式 (该功能仅对并联及群控有效, 单梯无效)。 It is specially used to relieve the rush hour traffic in the building. when the rush hour arrives, all elevators put into service will start operation immediately after the carrying capacity of the lobby reaches the present value ( usually full load ), and will maintain this mode during the rush hour ( this function is only valid for parallel connection and group control, and single elevator is invalid ).	○
目的层停靠提示 Destination floor park prompt	快到登记楼层时, 对应楼层按钮或数字闪烁, 提前预告电梯停靠楼层。 When the registration floor is approaching, the corresponding floor button or number flashes to give advance notice of the elevator park floor.	○
主板动态密码功能 Main board dynamic password function	调试电梯时, 要输入根据专门算法产生随机的数字组合, 保护控制柜参数不被随意设置, 增加安全性。 When debugging elevators, random digital combinations generated according to special algorithms should be input to protect control cabinet parameters from being randomly set, thus increasing safety.	○
过电流预检测 Over current pre - detection	驱动输出电流预检测, 增加主动力回路路上出现的故障保护。 Drive the output current pre-detection to increase the fault protection on the power circuit of the mainframe.	●

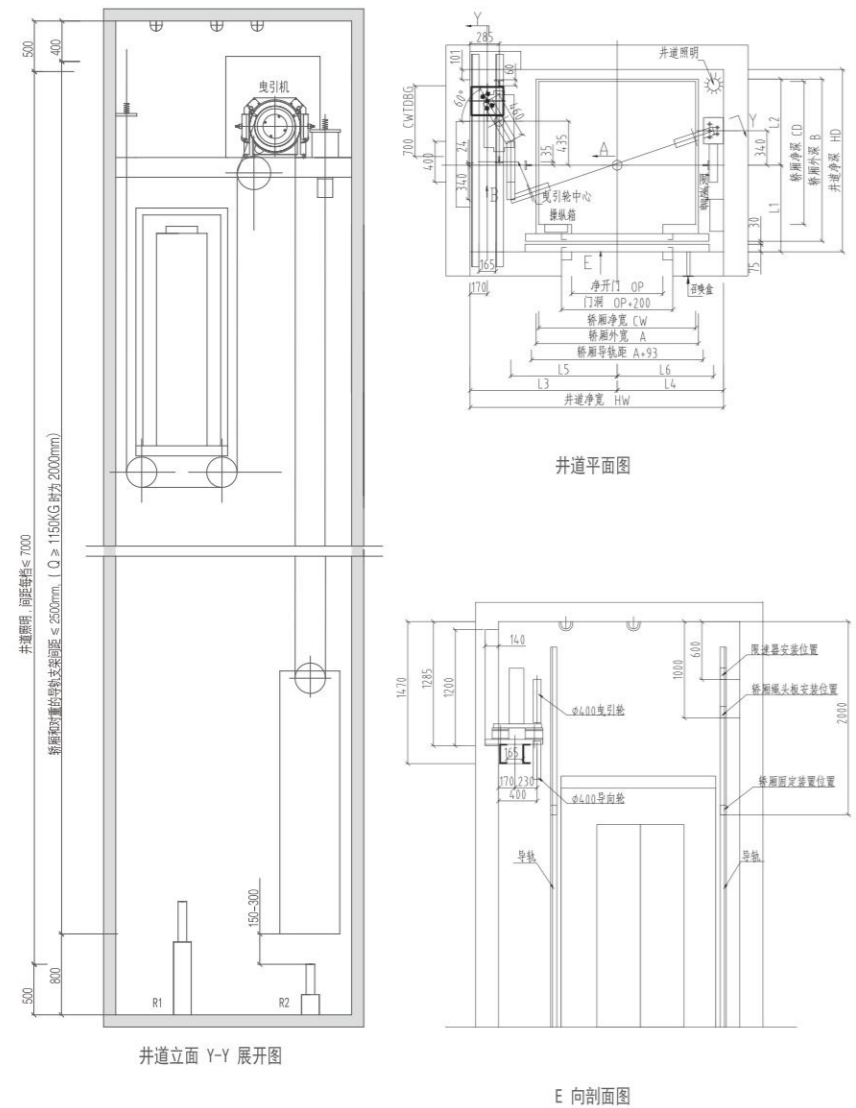
## 监控功能 Monitoring function

楼宇电梯监视接口 BA-Building Monitor Ports	为用户的大楼智能管理系统提供离散型电梯运行状态信号, 主要信号为: 运行方向、楼层信息、安全信息等。 Elevators with BA function can provide scattered elevator status for computer management of the building, such as running directions, floor numbers, safety signals, door signals.	○
楼宇监控串行通讯接口 Building monitoring serial communication interface	为用户的大楼智能管理系统以串行通讯485协议方式提供电梯运行状态信号, 主要信号为: 运行方向、楼层信息、安全信息等。 Provides elevator operation status signals to the user's building intelligent management system in the form of serial communication 485 protocols. Its main signals are: operation direction, floor information, safety information, etc.	○
小区监测系统 Residential area monitoring system	由微机在小区范围内实现对电梯进行全面监测的智能化管理系统, 可为大楼智能管理提供数据。 An intelligent management system with a microcomputer to carry out comprehensive monitoring of elevators within the residential area, which can provide data for intelligent management of buildings.	○
电梯远程监控系统 REM	可通过互联网或市话实现远程监测中心对用户电梯的24小时全程监护, 电梯发生故障或关人时, 会自动实时向中心报警。 24 hours Remote elevator monitoring can be implemented through Internet or telephone line. Auto alarming to REM center when elevator faulty.	○
BA接口板 BA interface board	从Input端采集电梯的位置信号、上下信号、故障信号、泊梯信号以及安全回路等信号, 经过编码器和电平转换, 从Output端输出BA系统能够识别的上述信号供其使用。 Collects elevator position signals, up and down signals, fault signals, mooring elevator signals, safety circuit signals and other signals from the input end, and outputs the signals recognized by the BA system from the output end for its use through encoder and level conversion.	○

● 标准 ○ 可选

# 无机房乘客电梯土建图 I 系列无机房结构

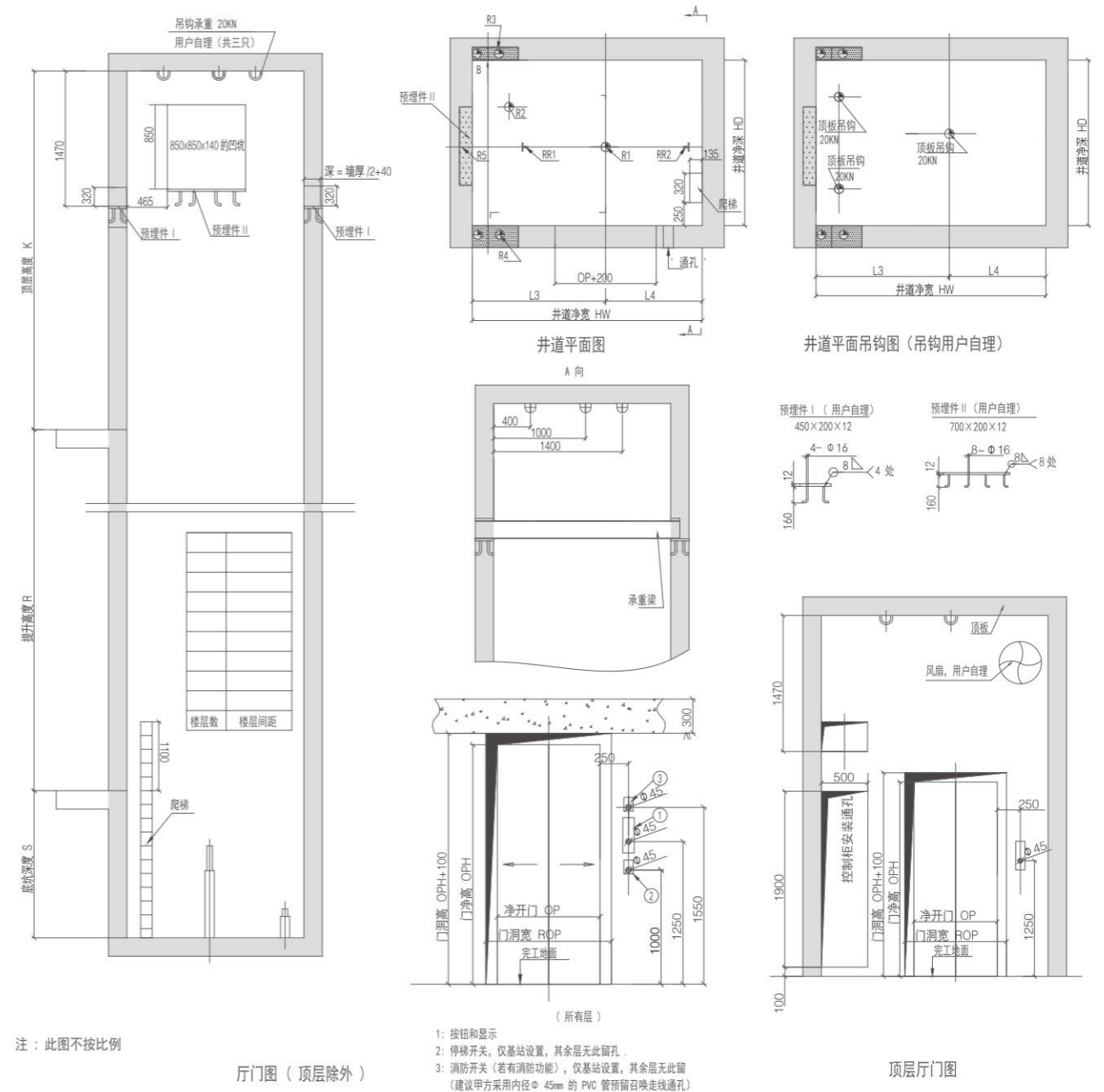
630~1000kg 1.0~1.75 m/s



注：此图不按比例

## 电梯土建技术条件

- 井道内一切建筑必须达到防火要求，不得装设与电梯无关设备、电源等及无关孔洞。
- 井道必须垂直，井道水平尺寸为最小净空尺寸，且垂直误差 $0 \sim +25\text{mm}/0 \sim 30\text{m}$ 、 $0 \sim +30\text{mm}/30\text{m} \sim 60\text{m}$ 、 $0 \sim +50\text{mm}/60\text{m}$ 以上。
- 当底坑底下有人能达到的空间存在，则对重缓冲器能安装在一一直延伸到坚固地实处桩墩上，或向电梯厂家询问安装对重安全钳。
- 电梯安装之前，所有层门洞必须有高度不小于1.2米的安全防护围封，并应保证需能承受所示各力。
- 封闭式井道根据需要设通风孔（一般在井道顶部和底部），其面积不得小于井道水平面积的1%，通风孔需设防护网。
- 电梯厅门、呼梯显示预留洞及其他预留孔洞在电梯安装完毕时需进行回填装修。
- 电梯井道最好为混凝土结构。如果井道为框架结构，要求自井道顶部楼板下平面向下2500mm范围内为钢筋混凝土，在导轨支架安装处应设置300mm高的混凝土圈梁并在每层厅门洞上沿和下沿均设300mm高与井道同宽的混凝土梁。如果井道为实心承重砖墙结构，应在每层厅门洞上沿和下沿均设300mm高与井道同宽的混凝土梁。



注：此图不按比例

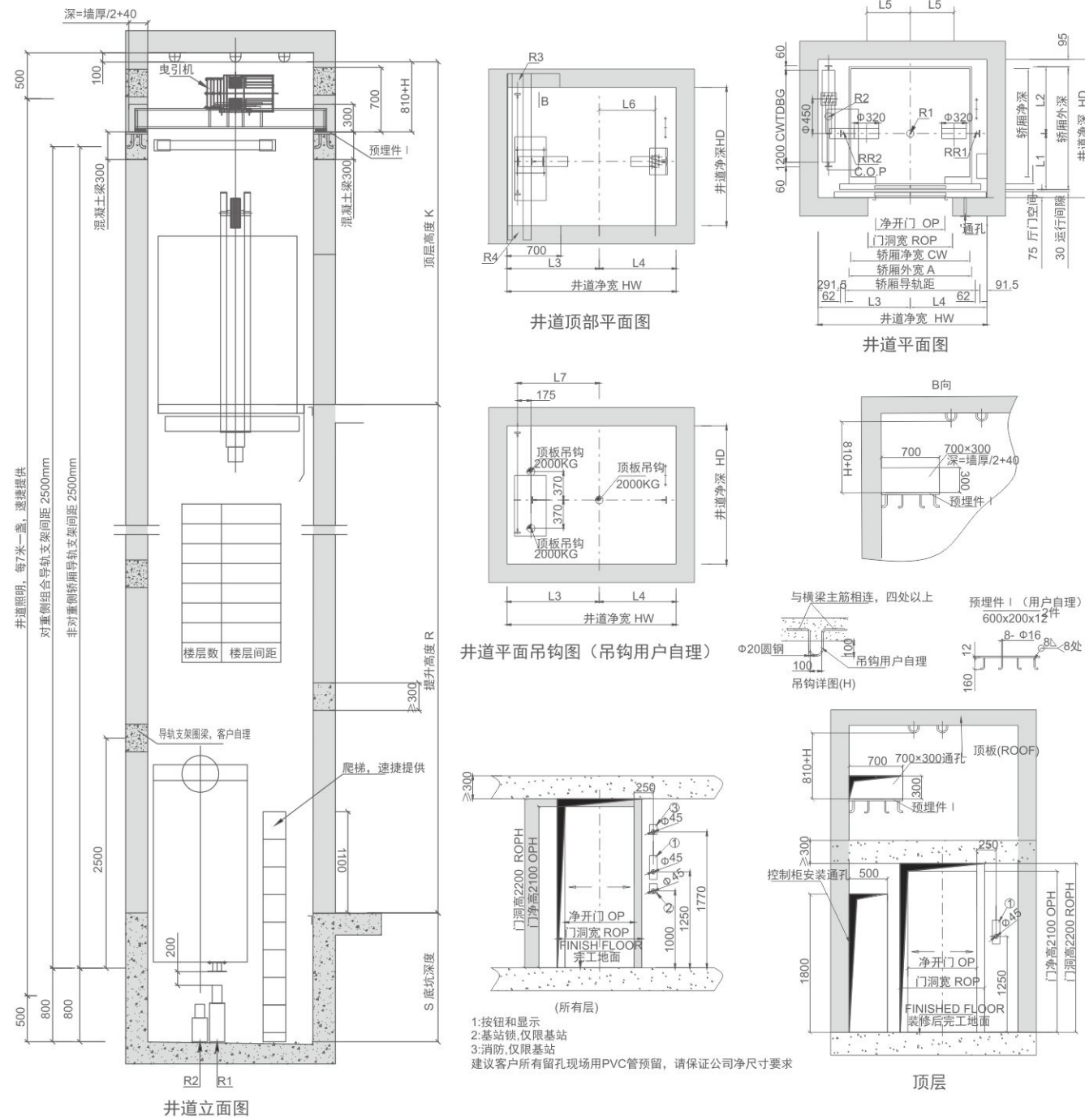
- 按钮和显示
- 停梯开关，仅基站设置，其余层无此留孔。
- 消防开关（若有消防功能），仅基站设置，其余层无此留孔（建议甲方采用内径 $\phi 45\text{mm}$ 的PVC管预留召唤走线通孔）

- 当两相邻层门地坎间距超过11米时，其间应设置一不得向井道内开启的安全门，安全门的尺寸不得小于350mm宽1800mm高。安全门应装设用钥匙开启的锁，当门开启后不用钥匙亦能将其关闭和锁住，即使在锁住情况下也应在不需要钥匙的情况下从井道内部打开。
- 底坑内应防水，若有积水坑，应在墙角处。
- 根据技术参数表中的要求，把电源拉到机房并设带保护的开关且上锁。电源波动范围不应超过 $\pm 7\%$ 。电源零线和接地线应分开，且接地电阻值不大于 $4\Omega$ 。
- 图中标明的所有载荷，除特别注明外都包含冲击修正量，井道墙和底坑的强度必需能承受所示各力。
- 图中标明的用户自理（预埋钢板等），需预先设置。
- 机房中的温度应保持在 $5 \sim 40^\circ\text{C}$ ，机房应平整且必须能够承受不小于 $7.0\text{kN}$ 每平方米的需能承受所示各力。
- 用户需设立救援值班室，并铺设通往机房的通讯线，当走线距离不大于500米时铺设1根六芯双绞屏蔽线( $3 \times 2 \times 0.75\text{mm}^2$ )，大于500米时铺设1根五类线楼面标准值均布活荷载。



# 无机房乘客电梯土建图 II 系列无机房结构

630~1000kg 1.0~1.75 m/s



注：此图不按比例

⚠ 土建技术条件同 I 系列无机房客梯

捷锐无机房客梯尺寸表 (I 系列无机房结构)

载重 (kg) Load/Passen	速度 (m/s) Speed	轿厢净尺寸 (mm) Net car size	开门净尺寸 (mm) Net opening	井道净尺寸 (mm) Net hoistway size	PIT	顶层净高 Overhead	最大提升 高度 Travel height	最大层 站数 Max stops	定位尺寸 (mm) Dimension	对重导轨距 (mm)	导轨反力 Rail force (kN)	底坑反力 PIT force (kN)	机房承载力 MR loading (kN)	吊钩 HOOK (kN)	
630(8)	1.0	1050X1410	700X2100	2000X1800	1600	3900	50	16	L1 855, L2 850, L3 1200, L4 800, L5 800, L6 700, L7 -	700	19.2, 28.8	64	40	15	2000
	1.5	1050X1410	700X2100	2000X1800	1700	4100	75	24	L1 855, L2 850, L3 1200, L4 800, L5 800, L6 700, L7 -	700	19.2, 28.8	64	40	15	2000
800(10)	1.0	1350X1410	800X2100	2300X1800	1600	3900	50	16	L1 855, L2 850, L3 1350, L4 950, L5 950, L6 850, L7 -	700	26.4, 39.6	88	52	21	2000
	1.5	1350X1410	800X2100	2300X1800	1700	4100	75	24	L1 855, L2 850, L3 1350, L4 950, L5 950, L6 850, L7 -	700	26.4, 39.6	88	52	21	2000
1000(13)	1.0	1550X1410	900X2100	2500X1800	1600	3900	50	16	L1 855, L2 850, L3 1450, L4 1050, L5 1050, L6 950, L7 -	700	30, 45	100, 85	60, 48	27	2000
	1.5	1550X1410	900X2100	2500X1800	1700	4100	75	24	L1 855, L2 850, L3 1450, L4 1050, L5 1050, L6 950, L7 -	700	30, 45	100, 85	60, 48	27	2000
1150(15)	1.0	1800X1410	1000X2100	2700X2000	1600	4200	50	16	L1 820, L2 885, L3 1520, L4 1180, L5 1085, L6 1035, L7 -	850	44, 44	78, 124	91, 48	-	2000
	1.5	1800X1410	1000X2100	2700X2000	1700	4300	75	24	L1 820, L2 885, L3 1520, L4 1180, L5 1085, L6 1035, L7 -	850	44, 44	78, 124	91, 48	-	2000
1350(18)	1.0	2000X1550	1100X2100	2900X2050	1600	4200	50	16	L1 870, L2 975, L3 1620, L4 1280, L5 1185, L6 1135, L7 -	850	44, 44	78, 124	91, 48	-	2000
	1.5	2000X1550	1100X2100	2900X2050	1700	4300	75	24	L1 870, L2 975, L3 1620, L4 1280, L5 1185, L6 1135, L7 -	850	44, 44	78, 124	91, 48	-	2000
1600(21)	1.0	2000X1750	1100X2100	2900X2150	1600	4200	50	16	L1 970, L2 1075, L3 1620, L4 1280, L5 1185, L6 1135, L7 -	850	44, 44	78, 124	91, 48	-	2000
	1.5	2000X1750	1100X2100	2900X2150	1700	4300	75	24	L1 970, L2 1075, L3 1620, L4 1280, L5 1185, L6 1135, L7 -	850	44, 44	78, 124	91, 48	-	2000

捷锐无机房客梯尺寸表（Ⅱ系列无机房结构）

载重 (kg) Load/Peak Speed	速度 (m/s) Speed	轿厢净尺寸 (mm) Net car size	开门净尺寸 (mm) Net opening	井道净尺寸 (mm) Net hoistway size	底坑深度 PIT S(mm)	顶层净高 Overhead K(mm)	最大提升 高度 Travel height Rmax(m)	最大层 站数 Max stops	L1	L2	L3	L4	L5	L6	L7	对重导轨距 (mm)	导轨反力 Rail force (KN)	底坑反力 PIT force (KN)	机房净力 MR loading (KN)	吊钩 HOOK (KN)		
630(8)	1.0	1150×1410	800×2100	1800×1900	1600	4300	50	16	730	870	1000	800	370	530	865	1200	34	23	64	23	28	2000
	1.5	1150×1410	800×2100	1800×1900	1700	4450	75	24	730	870	1000	800	370	530	865	1200	34	23	64	23	28	2000
	1.75	1150×1410	800×2100	1800×1900	1700	4500	90	24	730	870	1000	800	370	530	865	1200	34	23	64	23	28	2000
800(10)	1.0	1350×1410	800×2100	2000×1900	1600	4300	50	16	730	870	1100	900	470	630	965	1200	37	26	88	26	31	2000
	1.5	1350×1410	800×2100	2000×1900	1700	4450	75	24	730	870	1100	900	470	630	965	1200	37	26	88	26	31	2000
	1.75	1350×1410	800×2100	2000×1900	1700	4500	90	24	730	870	1100	900	470	630	965	1200	37	26	88	26	31	2000
1000(13)	1.0	1550×1410	900×2100	2200×1900	1600	4300	50	16	730	870	1200	1000	570	730	1065	1200	41	30	100	30	35	2000
	1.5	1550×1410	900×2100	2200×1900	1700	4450	75	24	730	870	1200	1000	570	730	1065	1200	41	30	100	30	35	2000
	1.75	1550×1410	900×2100	2200×1900	1700	4500	90	24	730	870	1200	1000	570	730	1065	1200	41	30	100	30	35	2000

说明：以上参数仅供参考，最终以土建确认图为准。